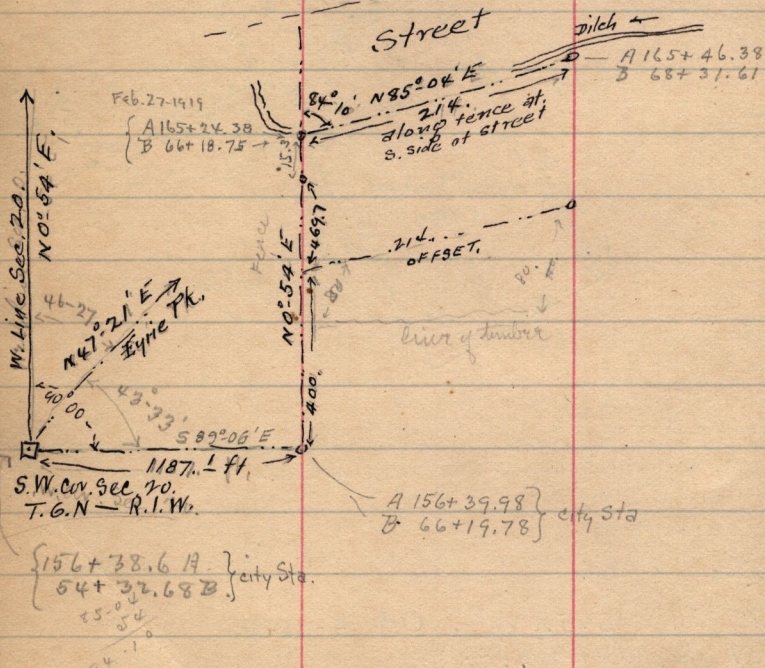


46

Oct. 5-1898.

32-178 - Jennetta Shurtliff to Jos. B. Dana. \$750.  
 T4. S.W. 1/4 Sec. 20. T. 6 N - R. 1. W. Beg. 1187.1 ft  
 E. of S.W. Cor. sd. 1/4 Sec. - M. 884.4 ft. N 85° 04' E -  
 214. ft. - S 1099.4 ft. - S 47° 25' W, 290. ft. -  
 N. 392.8 ft. to beg. S. 27.

Jos. B. Dana + Hack. Shurtliff  
 3/4 Chairmen.



Note - City Mt in ctr. Gibson Ave & 17<sup>th</sup> Str  
 at City Sta = A 165+52.86 & B 59+83.95

84.